

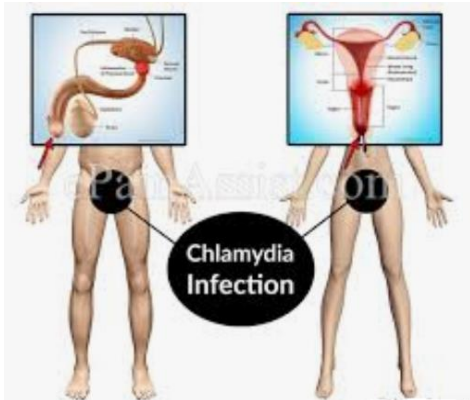
List of Diseases and Conditions

16 Sexual Health

- 16 00 Chlamydia
- 16 01 Genital Herpes
- 16 02 Genital Warts
- 16 03 Gonorrhea
- 16 04 Low Libido
- 16 05 Pelvic Inflammatory Disease (PID)
- 16 06 Syphilis
- 16 10 Trichomoniasis

When you have found your disease or condition, you look for the treatment color. The treatment colors are magenta (red-blue), blue, cyan (blue-green), green, yellow (red-green), and red. I give the treatment color numbers. Magenta = 0, blue = 1, cyan = 2, green = 3, yellow = 4, and red = 5. *Gonorrhea* would then be categorized as **16-03-5**. Here the last digit, the treatment color, is **red**. The first two digits are the disease/condition group (from 00 to 66). The next two digits (from 00 to 66) are the illness within the group, and the last digit (from 0 to 6) is the treatment color.

1 6 0 0 **5** Chlamydia

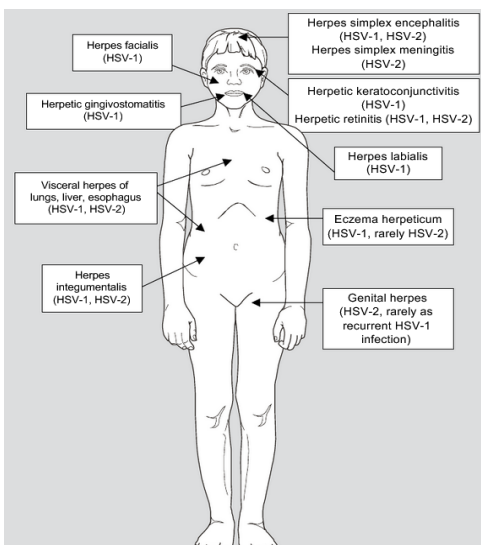


Chlamydia is a common sexually transmitted disease (STD). It affects both men and women and, in most cases, does not cause any symptoms. However, when it does produce symptoms and signs, these may not appear for weeks after your infection.

Symptoms in women include burning with urination and an abnormal vaginal discharge. Abdominal or pelvic pain is sometimes present. Blood in the urine, urinary urgency (feeling an urgent need to urinate), and increased urinary frequency can occur if the urethra is infected.

In men, symptoms, when they occur, can include a discharge from the penis and a burning sensation when urinating. In addition, pain in the testicles sometimes occurs. In both men and women, infection of the rectum can cause rectal pain, bleeding, and discharge from the rectum.

1 6 0 1 **4** Genital Herpes



Genital herpes is a sexually transmitted infection (also known as a sexually transmitted disease or STD) that affects the genital regions.

Signs and symptoms typically occur in outbreaks that are separated by a variable length of time. Once the virus resides in the body, an outbreak can occur at any time. People who carry the virus and do not have symptoms and signs can still spread the virus to others. During an outbreak, signs and symptoms include painful, small skin blisters on the genitals that pop and then ooze or bleed. Other associated symptoms and signs can include painful urination, a sensation of pins and needles, skin rash, penile pain, vaginal pain, and itching.

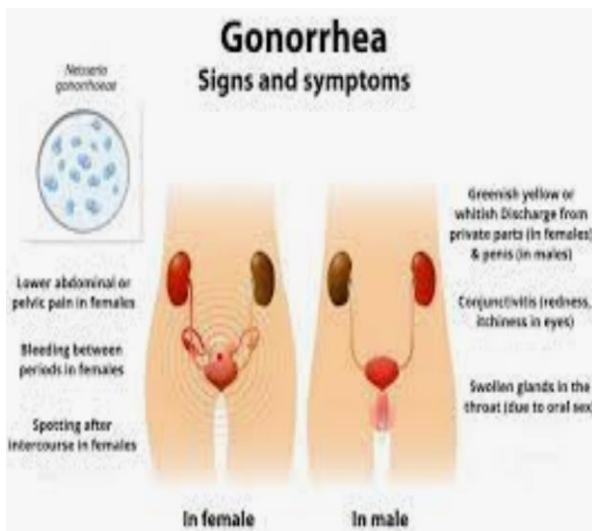
1 6 0 2 5 Genital Warts



Genital warts are benign growths (lumps or bumps) on the genital areas. They are raised, flesh-colored bumps or lumps that may have a jagged or rough appearance. Itching and burning are commonly associated symptoms, but there may be no symptoms in many cases except for warts.

They can occur in any location that is exposed during skin-to-skin sexual contact. Certain signs and symptoms, like vaginal discharge or bleeding, can occur if the warts are located in the vaginal opening in women.

1 6 0 3 5 Gonorrhea



Gonorrhea is a sexually transmitted disease (STD). The infection spreads through sexual contact of any type and affects both men and women.

Over half of women with gonorrheal infection do not have any symptoms of the disease. However, when symptoms occur, they can include pain in the lower abdomen, pelvis, testicle, or vagina and pain during sexual intercourse or urination.

Other associated symptoms and signs can include abnormal vaginal discharge that may contain pus, discharge from the penis, fever, itching, and burning of the penis, a frequent urge to urinate, and irregular menstruation in women.

Babies born to mothers infected with gonorrhea can develop eye infections.

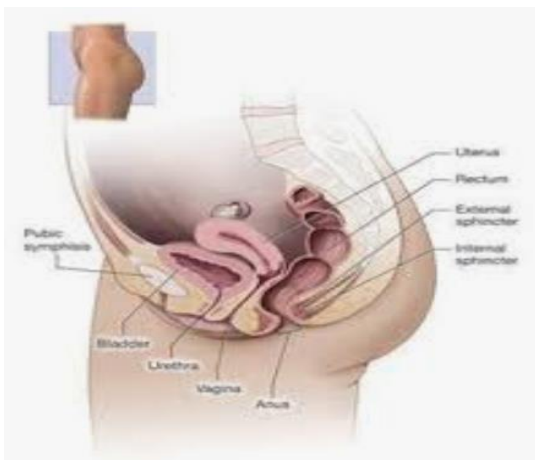
1 6 0 4 **1** Low Libido



A decrease in sex drive can develop both due to medical conditions and psychological or emotional issues. Inhibited sexual desire is a type of sexual dysfunction that affects both men and women. For example, a reduction in sexual desire has been associated with low testosterone levels in men. Likewise, women in the menopausal transition sometimes report a decrease in sex drive.

Multiple types of chronic illnesses and chronic pain can also lead to a decrease in sex drive, likely through a combination of the disease's physical effects and the psychological stress associated with a chronic illness. For example, painful intercourse (dyspareunia) can lead to loss of libido in women. Psychological factors associated with low libido include poor body image, anxiety, low self-esteem, stress, and poor communication. In addition, certain medications, such as some antidepressants, can also cause a reduction in sex drive.

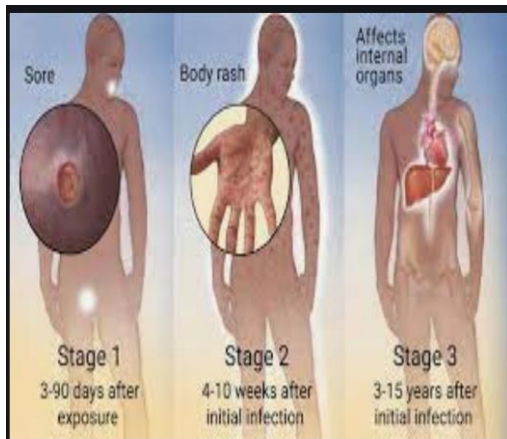
1 6 0 5 **5** Pelvic Inflammatory Disease (PID)



Pelvic inflammatory disease (PID) is a severe infection of the female reproductive organs in the upper genital tract. These include the uterus, fallopian tubes, and ovaries.

Signs and symptoms of PID include pelvic pain, vaginal bleeding, lower abdominal pain, pain during sexual intercourse, painful urination, chills, and fever.

1 6 0 6 **5** Syphilis

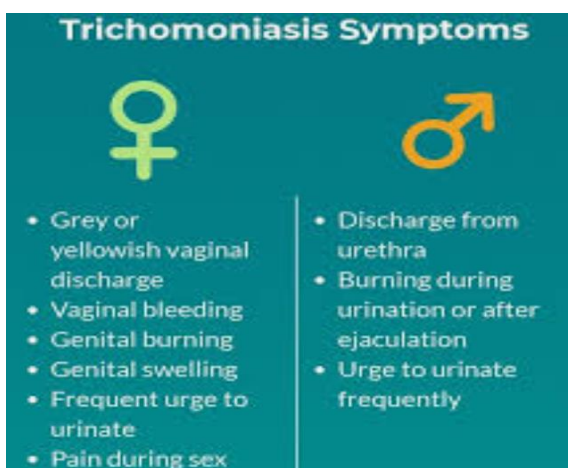


Syphilis is a sexually transmitted infection (or sexually transmitted disease). Syphilis can also spread to an unborn baby by an infected mother. Signs and symptoms of syphilis develop in stages. The first stage is characterized by a painless ulcer or sore in the mouth or genital area known as a chancre.

Secondary syphilis is associated with a skin rash found nearly anywhere on the body that typically does not itch. This rash is often found on the palms of the hands and the soles of the feet. Other associated signs and symptoms can include fever, headache, weight loss, enlarged lymph nodes, fatigue, and hair loss.

Symptoms of the third stage (tertiary syphilis) develop in some people many years after the infection. Tertiary syphilis can cause damage to many different organs.

1 6 1 0 **4** Trichomoniasis



Trichomoniasis (or "trich") is a widespread sexually transmitted disease (STD). It is caused by infection with a protozoan parasite called *Trichomonas vaginalis*.

Although symptoms of the disease vary, most people who have the parasite cannot tell they are infected.