

List of Diseases and Conditions

00 Allergies

- 00 00 Bee and Wasp Sting
- 00 01 Churg-Strauss Syndrome
- 00 02 Eye Allergy
- 00 03 Hay Fever
- 00 04 Latex Allergy
- 00 05 Makeup Allergy
- 00 06 Nasal Congestion
- 00 10 Peanut Allergy
- 00 11 Poison Ivy, Oak, and Sumac

When you have found your disease or condition, you look for the treatment color. The treatment colors are magenta (red-blue), blue, cyan (blue-green), green, yellow (red-green), and red. I give the treatment color numbers. Magenta = 0, blue = 1, cyan = 2, green = 3, yellow = 4, and red = 5. *Hay Fever* would then be categorized as **00-03-0**. Here the last digit, the treatment color, is **magenta**. The first two digits are the disease/condition group (from 00 to 66). The next two digits (from 00 to 66) are the illness within the group, and the last digit (from 0 to 6) is the treatment color.

0 0 0 0 **0**

Bee and Wasp Sting



Bees (*Apidae*) and wasps (*Vespidae*) are venomous stinging insects (class Hymenoptera). A honeybee mostly only attacks when it feels threatened, inflicting a single painful toxic sting. However, the Africanised 'killer' bee is highly aggressive, resulting in massive bee attacks throughout most of the Americas, where it has become endemic. Wasps also are aggressive, sting to attack, and can sting multiple times.

0 0 0 1 **0**

Churg-Strauss Syndrome

Churg-Strauss syndrome
~ Allergic granulomatosis

Δ Facts:

- Medium and small vessel autoimmune vasculitis that leads to necrosis
- Involves mainly the blood vessels of the lungs (it begins as a severe type of asthma), gastrointestinal system, and peripheral nerves
- Also affects the heart, skin and kidneys

Δ History / PE:

- Allergies
- Asthma

Δ Diagnosis:

- Eosinophil granulocytes
- Perinuclear pattern of antineutrophil cytoplasmic (p-ANCA) antibodies

Δ Treatment:

- Corticosteroids (eg. prednisolone)

Δ Differential Diagnosis:

- Polyarteritis nodosa
- Wegener's granulomatosis (c-ANCA)

med_life_easy
Follow us on Instagram

Churg-Strauss syndrome is a disorder marked by blood vessel inflammation. This inflammation can restrict blood flow to organs and tissues, sometimes permanently damaging them. This condition is also known as eosinophilic granulomatosis with polyangiitis (EGPA). Asthma is the most common sign of Churg-Strauss syndrome. Signs and symptoms of Churg-Strauss syndrome include fatigue, fever, weight loss, nasal passage inflammation, cough, shortness of breath, and chest pain.

0 0 0 2 **0**

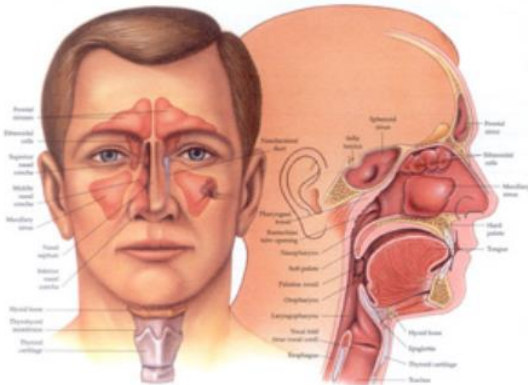
Eye Allergy



Eye allergies are allergic reactions that involve the eyes. Allergic eye symptoms are common and affect around 10% of all people.

Signs and symptoms of allergies reactions involving the eyes can include red (bloodshot), irritated eyes, itchy eyes, tearing or runny eyes, swollen eyelids, eye soreness, burning eyes, eye pain, or sensitivity to light.

0 0 0 3 **0** Hay Fever



Hay fever is a term that describes a seasonal allergic reaction to airborne particles such as pollen. The medical term for hay fever is allergic rhinitis. Hay fever is a common condition that affects up to 30% of the population.

Signs and symptoms of hay fever include a runny nose with clear mucus, nasal congestion, itchy eyes, watery eyes, and sneezing.

0 0 0 4 **0** Latex Allergy



A latex allergy is an allergic reaction to products containing latex. Latex is derived from the fluid extracted from a rubber tree. It has been used in several household products, as well as medical products.

Signs and symptoms of a latex allergy include an itchy skin rash at the contact site. The rash is red and resembles the rash of poison ivy. Another type of reaction to latex is the more severe anaphylactic reaction, which can involve the skin, respiratory system, gastrointestinal system, and circulatory system.

0 0 0 5 **1** Makeup Allergy



A makeup allergy is an allergic reaction to any component in cosmetic products. Cosmetics are substances applied to the surface of the skin, hair, or nails. Cosmetics often contain a complex mixture of perfumes, emulsifiers, sunscreens, pigments, metals, resins, preservatives, and a variety of inert materials and botanical products.

The face is most commonly involved in makeup allergy. Symptoms and signs of makeup allergy include a rash that often appears as a scaling, flaking, dry, swollen red area that may itch.

0 0 0 6 **0**

Nasal Congestion



Nasal congestion, or "stuffy nose," is a term that refers to the obstruction to the flow of air in and out of the nose. Nasal congestion most commonly results from inflammation and swelling of the lining tissues of the nasal passages and sinuses. Less commonly, anatomical obstructions (for example, a deviated nasal septum, foreign bodies) may lead to nasal congestion. Rarely, tumors of the nasal passages or chronic medical conditions may be the cause of nasal congestion.

0 0 1 0 **1**

Peanut Allergy



Peanut allergy refers to an allergic reaction to peanuts or products containing peanuts. It is a type of food allergy that is relatively common in developed countries, and most of those affected are children under the age of 3. Peanut allergy is most likely to occur in people with other allergies or a family history of allergies. About 90% of reactions to peanuts occur within 20 minutes of exposure. Signs and symptoms can include skin redness, hives, and itching.

0 0 1 1 **0**

Poison Ivy, Oak, and Sumac



Sensitivity to poison ivy, oak, or sumac is widespread. When coming in contact with the resin from poison ivy, oak, or sumac, many people have a characteristic rash reaction. The medical name for the condition is allergic contact dermatitis. Signs and symptoms of poison ivy, oak, or sumac rash include a mild, red, bumpy skin rash that typically goes away within 5 to 12 days. Other associated symptoms and signs include itching that may be intense, blistering, and swelling. The rash usually arises on areas of skin that have come in contact with the plants, but it can sometimes develop in other areas.